

# Trails, Rails, & Tales



September - October, 2016

Volume 3 • Number 5

The Official Newsletter of the Chisholm Trail Division of the **NMRA**

## “FALL CREATIONS”

## contributors



**RANDY STUCKY** Shares Indy experiences beginning on page 11

**JIM MARLETT** (and others) “position” a section of his pike in place while pleasing “the Mrs.” ~ page 18



**DAN HAGENBUCH** shares (not one; not two; but) three “tales from the road...” ~ beginning on page 19



¿GUESS WHO? ~ page 24

CALENDAR/COMING ATTRACTIONS... ~ page 25

IN FUTURE ISSUES... ~ page 27

## “our” Schedule of Events

Be sure to mark your calendar

### September, 2016

- Sept. 6 **Evening** Meeting at the Olivet Baptist Church  
3440 West 13<sup>th</sup> St N, Wichita, KS 67207-4560  
13<sup>th</sup> Street North & High Street  
Beg. gathering .....6:45pm  
• NMRA meeting .....7:00pm - 9:00pm  
° Show business meeting to be followed by:  
Program I  
° Program II

See Article on Page 3 entitled:  
“Layout Tours - September 10<sup>th</sup>”

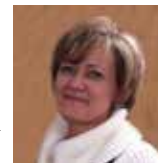
- Sept. 10 Chisholm Trail Division of NMRA ~ Layout Tours  
Details on Page 3 .....8am - 5pm
- Sept. 17 Wichita Area Garden Railway Tour ~ 10am - 5pm  
Details on Page 4 entitled:  
“Layout Tours - September 17<sup>th</sup>”
- Sept. 20 WAMRR • **Luncheon** Meeting ..... 11:30am  
Our Hostess is “Bere” at Golden Coral  
11006 East Kellogg Drive  
Wichita, KS 67207-1922
- Sept. 24-25 Wichita Toy Train Club's Annual Train Show  
Cessna Activity Center (Wichita, KS)  
Saturday .....9:00am - 5:00pm  
Sunday .....10:00am - 3:00pm

### October, 2016

...to be continued on page 2...

Greetings everyone!

It's time to prepare for our annual elections coming up in December. A Nomination Committee will be created and looking for interested candidates. If you are interested in being on the Nomination Committee, please eMail me your request prior to the October 4<sup>th</sup> NMRA meeting. Reminder of the upcoming Wichita Toy Train Show, September 24<sup>th</sup> & 25<sup>th</sup>. We will be taking many photo shots while attending "Miniature Wonderland" and plan to share when we return!



Pamela Todd  
Superintendent - 2015  
Chisholm Trail Division  
of NMRA

Pamela Todd  
Superintendent - 2016  
Chisholm Trail Division

TRAILS, RAILS, & TALES

is published bi-monthly.  
It is sent to members of the  
Chisholm Trail Division of the NMRA

**DIRECTOR**  
Philip Aylward  
Aylward1@cox.net

**SUPERINTENDENT**  
Pamela Todd  
ict\_pamela@yahoo.com

**ASSISTANT SUPERINTENDENT**  
Rob Neises  
jgr\_racing@yahoo.com

**PAST-SUPERINTENDENT**  
Lionel M. Smith, Jr.  
LionelSmithJr@Cloud.com  
2015 - 2016

**PAYMASTER/TREASURER**  
Philip Aylward  
Aylward1@cox.net

**CLERK/SECRETARY**  
Randy Stucky  
Rita.Stucky@wesleymc.com

FROM THE EDITOR'S DESK

Published correspondence may be edited for length or style. All published letters become the property of this Newsletter. When submitting items/future articles, please-Please-PLEASE:

- Send your text separate from your graphics/photos.
- Please submit photos in as large a format (the most pixels) as possible.

Deadlines are as follows: to appear in the:

- January/February issue, please submit prior to December 15<sup>th</sup>; March/April issue, please submit prior to February 15<sup>th</sup>; May/June issue, please submit prior to April 15<sup>th</sup>; July/August issue, please submit prior to June 15<sup>th</sup>; September/October issue, please submit prior to August 15<sup>th</sup>; November/December issue, please submit prior to October 15<sup>th</sup>. Send your questions, thoughts, comments via eMail to: [alan.a.aagaard@gmail.com](mailto:alan.a.aagaard@gmail.com)



Alan A. Aagaard  
Newsletter Editor  
Chisholm Trail Division  
of NMRA

Alan A. Aagaard  
Newsletter Editor  
Chisholm Trail Division

...continued from page 1...

October, 2016

- Oct. 1 Kansas Central Division meeting ----- 1:00pm-??  
at David & Christine Heinsohn's home  
in Elmdale, KS
- Oct. 4 **Evening** Meeting at the Olivet Baptist Church  
3440 West 13<sup>th</sup> St N, Wichita, KS 67203-4560  
(13<sup>th</sup> Street North & High Street)  
Begin gathering -----6:45pm  
• NMRA meeting -----7:00pm - 9:00pm  
° Short business meeting, to be followed by:  
° Program I  
° Program II
- Oct. 8-9 • Hutchinson Train Show and...  
• Railroad Enthusiast's Show (Holiday Inn, Beatrice, NE)
- Oct. 15 Western Kansas Train Show -----9am - 5pm  
16 Ellis County Fair Grounds (Hays, KS) --- 11am-4pm
- Oct. 18 WAMRR • **Luncheon** Meeting ----- 11:30am  
Our Hostess is "Bere" at Golden Coral  
11006 East Kellogg Drive  
Wichita, KS 67207-1922

November, 2016

- Nov. 1 See page 25 and beyond...

December, 2016

- Dec. 6 NMRA meeting and "white elephant gift exchange"



**MEMBERSHIP CHAIR**  
Dean Lippincott  
dean.lippincott@gmail.com

**PROGRAM CHAIR**  
Larry E. Gulick  
legdag@cox.net

**HOSPITALITY CHAIR**  
Dan Hagenbuch  
dhagenbuch@att.net

**ACHIEVEMENT PROGRAM CHAIR**  
Chris C. Dancy  
cjdancy@cox.net

**MCoR CONVENTION CHAIR**  
{...open...}  
@

**WEBMASTER**  
Rob Neises  
jgr\_racing@yahoo.com

**URL**  
<http://www.>

**YAHOO DISCUSSION GROUP**  
<https://groups.yahoo.com/neo/groups/wamrr/info>  
Jim Marlett  
jMarlett@cox.net

**NEWSLETTER EDITOR**  
Dr. Alan A. Aagaard  
alan.a.aagaard@gmail.com

**NEWSLETTER ASSOCIATE EDITOR**  
Gene Bowers  
112reNewed1012@cox.net

Entries to be considered for publication must be received by the Newsletter Editor by the tenth day of the month prior to the issue of publication.  
Alan A. Aagaard  
[alan.a.aagaard@gmail.com](mailto:alan.a.aagaard@gmail.com)

**CONTRIBUTORS**  
Randy Stucky, Dan Hagenbuch, Pam Todd, and Alan A. Aagaard

To change your mailing address; report a missing issue; or make other membership inquiries, either eMail or call.

**COLOPHON**  
Designed and composed using Adobe InDesign, Illustrator & PhotoShop CS6™ on a Macintosh MacBook Pro™  
The main font families used were **COPPERPLATE GOTHIC**, Goudy Old Style, Stone Sans Semi, & Symbol

# layout tours



## Saturday, September 10, 2016

10:00am - 5:00pm

- a. We will meet at our normal NMRA gathering location: Olivet Baptist Church  
3440 West 13<sup>th</sup> Street North  
Wichita, KS 67203-4560  
(13<sup>th</sup> Street North & High Street)

Begin gathering at 8:00am for the people who find that location convenient.

- b. We will travel to Lowe's in Derby and join up with the group who chose to meet there.

1. From there we will travel to Arkansas City to Chris Dancy's home at 102 South B. Street (Arkansas City, KS 67005-2612), to visit his layout.

2. From there we will go to lunch.

3. After lunch we will "check out" a new museum/hobby shop in Mulvane, KS. I don't have an exact address, but it is about one-block East of the Santa Fe museum (just one or two shops East of the Four Way Stop) on the south side of the street. If time permits we can check out both museums.

4. From there we will return to the Wichita Toy Train Club and Museum located at 130 South Laura Street (Wichita KS 67211-1512).



SEPTEMBER	OCTOBER
17 <sup>th</sup> • Tom B.	12 <sup>th</sup> • Randy B.
19 <sup>th</sup> • Jim Me.	17 <sup>th</sup> • Sam Y.
21 <sup>st</sup> • John K.	30 <sup>th</sup> • Tom Sm.

**Birthdays**  
September and October



Saturday, September 17, 2016

10:00am - 5:00pm

19 Annual

# WICHITA AREA GARDEN RAILWAY TOUR



Saturday, September 17, 2016



**W**ELCOME to the Wichita Area Garden Railway Society's annual Garden Railway Tour.

We hope you and your family will enjoy the sights and sounds of the large scale trains as they wind through these unique gardens.

WAGRS is a group of garden railway enthusiasts who promote the hobby through community activities.

Our club participates at Botanica's



**Editor's Note:**

My attempts at capturing and/or scanning their "original 4-page flier" did not meet my level of quality (see above). So, please go to their "Facebook™" site (see below) for a copy of their flier.


..."Please like us on Facebook™ at Wichita Area Garden Railway Society..."



yes, it's true...

on

# September 25, 2016




## CABOOSE DAILY NEWS

More than a Hobby Store - A Model Railroad Institution  
- Denver Colorado 1938 - 2016 -

Vol. 001, 2016 one page Full Steam Operation  
Thank you to all of our loyal customers, friends, staff and family.


### DUANE MILLER DECIDES TO RETIRE -CABOOSE HOBBIES TO CLOSE-



My father, Glenn Brazelton, bought Hobby House in 1951. He converted it from a mostly model plane store to all trains in 1963 and renamed it Caboose Hobbies. I started working in the store during high school and in 1969 starting working full-time after serving in the Air Force.

Joanna and I moved the store to its present location on Broadway in 1981. In 2014 the Guinness Book of World's Records certified us as "The World's Largest Model Train Store." We are proud of our many employees and our wonderful customers. Sadly, the time has come for Joanna and me to retire. Therefore, with regrets, Caboose Hobbies will close its doors effective 09/25/2016. We would like to thank all our loyal customers for their years of support.

Duane and Joanna Miller





*Images courtesy of their site*

# looking back at our past events...

Chisholm Trail Division - NMRA  
July 5, 2016

Meeting was called to order at 7:00pm by Rob Neises, Assistant Superintendent.

Minutes  
approved as corrected and distributed

Program committee  
will be meeting soon for the second half of the year

Treasurer's report:  
Balance as of May 31, 2017 was reported  
Cash on hand as of May 31, 2017 was reported  
motion to approve was by Dan Hagenbuck and seconded by Bill Phillips

Announcements followed:

- Claudia Rollstin - had plastic for delivery; Bragdon™ rock molds for sale; and we were all mortified with her announcement of her closing her store on North Broadway on Labor Day, 2016 - ...yes, it's closed by this reading...

Gene Bowers  
ATSF - calendar art  
Time Tables  
Transportation Museum  
Train Fest - July 16, 2016  
Tour of Union station



Video Introduction was presented by Larry E. Gulick.  
Howard Zane video #1 of 3 available  
Zane is in his mid-seventies

“The Piermont Division of the Western Maryland is Howard Zane’s beautifully sceniced and detailed model of a West Virginia coal hauler. This layout, a window into the past, evokes fond memories of a different time in America. You’ll enjoy railfanning this layout set in 1955, and recalling or learning about that era



Howard is one of the partners in the Great Scale Train Shows, and he knows the hobby...from brass collecting to scratchbuilding. His skills as an industrial/architectural designer let him build a super-detailed city or landscape a gorgeous rural scene from a plan that’s never been put on paper.



This free form approach to the hobby has resulted in a railroad that is 3-D art. Structures, signals, and trees are selected and placed for color and aesthetic enhancement. Currently 2850 sq ft (27' X 27') (would have been 5,000 but city wouldn't allow him having a basement without home above it

HO-Scale

Mr. Zane has participated in the Great Scale and Model RR Show for the past 25 years.



He also has a collection of more than 2,500 brass locks

The music on the video was by Howard Zane (an Industrial designer by trade and an Artist, sculpture, model maker by hobby).

The layout consisted of Motive power including some Consolidated's plus both 3 & 4 truck shays; Lots and lots of people; and he was proud of his Decopod (2-10-0). Using his background of graphic design (3-D) he showed his very well done layout.

Structures of Styrene were treated using

- FlowQuil™ white
- India ink and alcohol
- FlowQuil™ earth
- black weathering power

His Brickwork was treated using

- pastels
- latex paint
- washed with India ink

Streets/roads at angles

He was adamant about scenes MUST tell a story

The evening's second video was:

Kalmbach's "Dream • Plan • Build" video series #73117D  
Painting Backdrops == "Special Project Edition"

We viewed the first 42 minutes:

Chapter 1 ~~~~~ Getting Started: Adding Clouds to your backdrop

- Using a Template and Spray Paint
- Stippling with Acrylics
- Creating a Storm Scene (with lightening)

Chapter 2 ~~~~~ Using Tracing Paper to Create a Detailed Scene

Getting started by adding clouds to your backdrop

- templates and spray paint
  - rattle can white on top
  - gray on bottom of clouds
- Acrylic - stippling action
  - white - top of cloud
  - Gray - bottom of cloud
  - yellow- sparingly to base of cloud

Creating a Storm scene

- wet on wet
  - begin by rePainting the sky again
  - stiffer brush - sipping (lighter on top and darker on bottom)
  - darken up the base of the clouds

Using tracing paper to create to sketch out ideas

- use reference materials for reality
- refine sketches
- transfer to backdrop using graphite transfer using a pencil acts as a "guide line"

Using Acrylic paint and pallet

Trees

background

trunks

over paint leaves through stippling

Barns and farmhouse

paint middle of bldg first

Adding Buildings to an Urban Scene

.,.,.,.,.

*and it became 9:05pm and Rob called "time!"*

.,.,.,.,.

so, the remaining Chapters to be viewed were:

Chapter 3 ~~~~~ Adding Buildings to an Urban Scene

Using Modular Buildings

Creating a Building by Marker Rendering

Chapter 4 ~~~~~ Making Roads Disappear into Your Backdrop

Working with Angled Roads

Working with Perpendicular Roads

Chapter 5 ~~~~~ Blending your Scenery into your Backdrop, and

Blending Rocks & Trees

Blending Water & Structures

Chapter 6 ~~~~~ Hiding Holes in Your Backdrop

Using Structures

Using Trees





# WICHITA AREA MODEL RAILROADERS

Monthly Luncheon Meeting  
July 19, 2016



11:30am at Golden Corral  
11006 East Kellogg Drive  
Wichita, KS 67207-1922  
(Just a short distance west of Greenwich Road on north side of street)  
Our Hostess is "Bere"

\*\*\*\*\*  
\*\*\*\*\*

Food, Fun, and Fellowship!  
That's the reason for...Wichita Area Model Railroaders,  
a fellowship of model railroaders in the Wichita, Kansas area.

\*\*\*\*\* Tuesday's Program \*\*\*\*\*

Alan Aagaard shared an eMail from Lynn and Fred Way - which was well received

Lionel Smith made announcements about what Gene Bowers was asked to speak about: the Santa Fe Railway Historical & Modeling Society Convention held in Wichita!

Gene Bowers shared with us through the high points of the convention!

- History: Wichita has hosted the convention 4 times:
- Hotel rooms were booked out 4 years in advance (with prices frozen at 2012 rates)
- 1991
- 1993
- 2004
- 2016
- Mr. Harlem Boyce has been President of the society for 6 years
- Conference began on Tuesday
- Wednesday was a bus trip to Abeline, KS (to ride the Smoky Valley RR and to visit the Dwight D. Eisenhower Presidential Museum)
- Thursday was a trip to Winfield KS to ride the "Southern Kansas & Oklahoma Line (SKOL)
- 160 arrived for those first two trips
- 320 were officially at the conference



- Besides the Railroad Clinics there were also "Ladies Clinics/Activities"
- PILES of "timetables" were provided by a retired ATSF employee
- "All-In-All" it was a wonderful success
- Next year to be held in Tulsa, OK

Next on the agenda was the “Share-and-Tell” portion of Treasured purchases which included

- Dan Hagenbuch’s Spectrum Kit

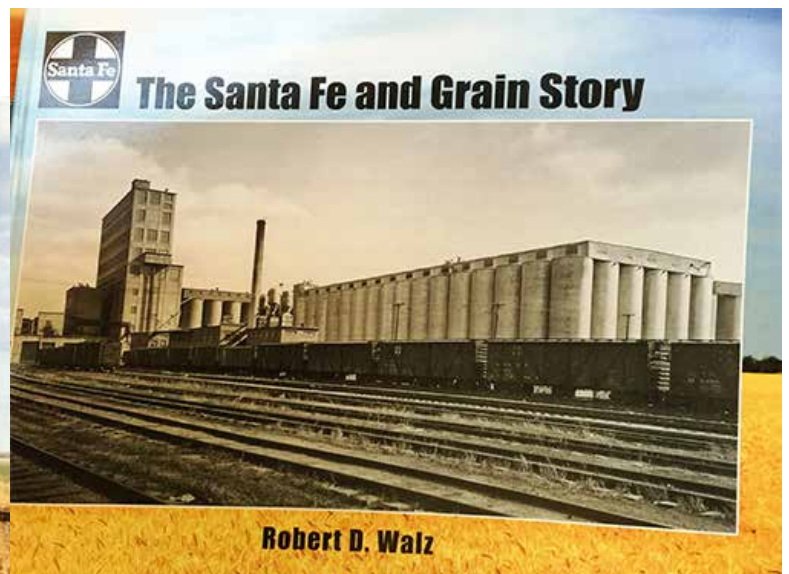
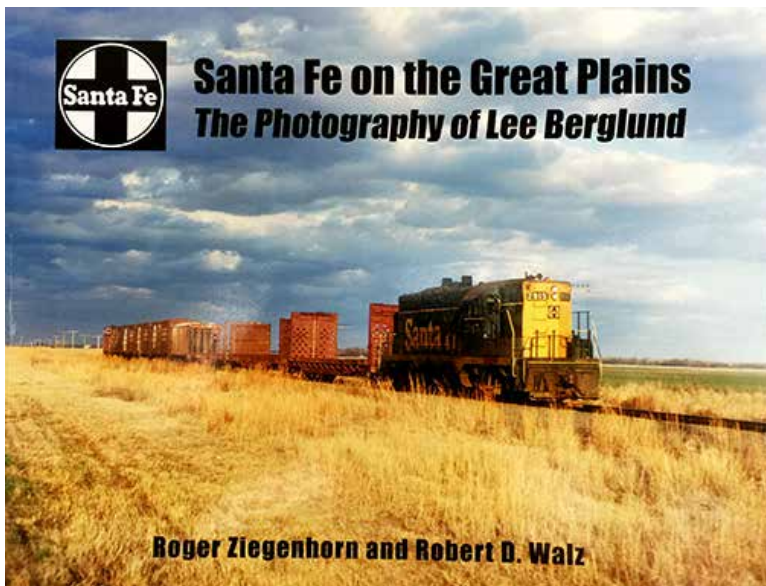


- Larry Gulick purchased items he shared



- Pam Todd shared her autographed towel

- Randy Stucky bought two books





Ron Werak saw this “tied-up” in Winfield, KS (April 1, 2016) and wanted to share (...no, it’s not an “April Fool’s Joke...”)



## NMRA National Convention

Indianapolis, IN

July 3-10, 2016

Story and Photos by Randy Stucky



I spent three days in Indianapolis, Indiana. I only went on one tour, which was the Indianapolis Motor Speedway (my apologies to the modelers who had their layouts on the tours). I was a late registrant.

My Dad wasn't really a car race fan except for the Indianapolis 500. When this race was on, he had a radio close by. He and Mom got to know one of the drivers by the name of Bill Vukovitch. Mr. Vukovitch told

my folks that anytime they wanted to go to the race to let him know and he'd get them tickets. Mr. Vukovitch won the 1953 and 1954 races with the same car which was later placed in the Speedway Museum. In 1955, he was well on his way to winning his third straight Indy 500 when he had an accident and was killed. My folks nev-





er made it to the race. While at the speedway museum, I took the “Kiss the Bricks” tour. This was a lap around the 2.5 mile track. A tour guide pointed out landmarks and other special places. At the “Finish Line” is a strip of bricks about 3 feet wide and stretching across the entire track. People were encouraged to kneel and “Kiss the Bricks” while getting their picture taken.



The winning car from the “FIRST” race



Al Unser's car



There is our Randy “Kissing The Bricks”



Ms. Danica Patrick's “Rookie” car

The National Train Show covering about 10 times that of the Wichita Train Show and Swap Meet. Free catalogs were offered and large layouts were on display.

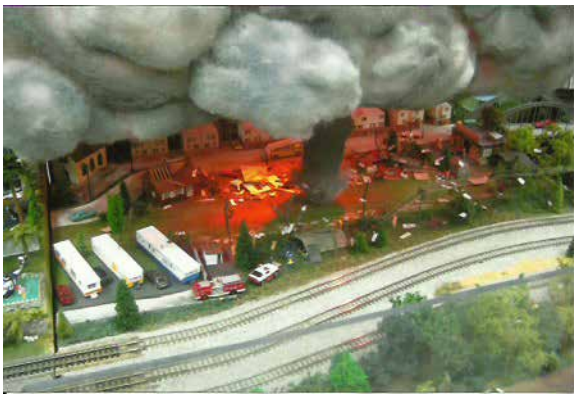


O-gauge PA-1 passenger train at the Train Show  
(Love their choice of color!)

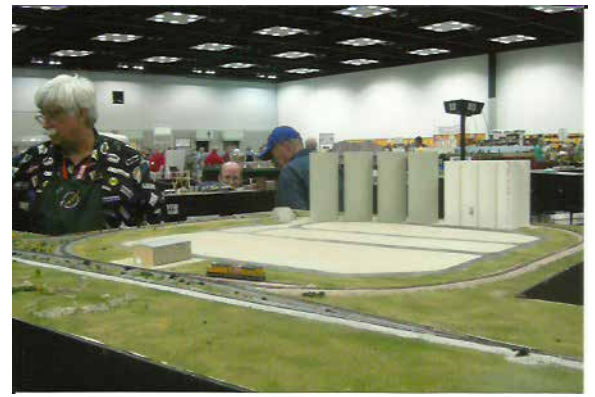


Passenger Car yard  
(Club from Ohio)





Storm over module with Tornado touching down



David Heinsohn near a model of elevators at Canton, KS



Introduction to Halstead, KS



the Bernard Warkentin house (in the trees)



Freight train eastbound through Halstead, KS



The Circus even made it to the train show

The dates for future National Conventions were published:

- 2017 Orlando, Florida (July 30 - August 6)  
[www.nmra2017Orlando.org](http://www.nmra2017Orlando.org)
- 2018 Kansas City (August 5 - 12)  
[www.kc3018.org](http://www.kc3018.org)
- 2019 Salt Lake City, UT (July 7 - 12)  
[nmra2019sLc@outlook.com](mailto:nmra2019sLc@outlook.com)
- 2020 St. Louis, MO (dates to be announced)

so mark your calendars Now.

**Anecdotal Note from the Editor: It was at the "National Train Show" where we at the "Chisholm Trail Division" received our newest member. Ken Gale joined the NMRA and has become most active. He tagged along with us on the Layout Tour held September 10, 2016, (details next issue).**



# 2016 National Train Show

July 8 - 10, 2016

Indianapolis, IN

Indiana Convention Center

100 South Capitol Avenue

Indianapolis Indiana 46225

## Features

The World's Best Known Manufacturers  
Over 180,000 square feet of exhibit space  
Hands-On Demonstrations  
44,000 Sq. Feet of Modular Layouts  
Ask The Collectibles Appraiser  
2016 Train Show Fact Sheet (pdf)

## Special Highlights

It's all Here – All of the latest and greatest model trains, accessories, collectibles and more from the world's best-known manufacturers and retailers geared for all model railroaders – from first timers to old timers.

The Incredible Lego®MiniLand – It'll stop you in your tracks! This 2,500 sq. ft. area is dedicated to the creation of a dynamic, originally-designed display featuring operating model railroads, hundreds of train cars, various landscape settings and waterfalls, scale building, retractable bridges, and more...and all made entirely out of millions of Lego® pieces! Attendees are invited to “meet the modelers” and learn how to build their very own original display.

Ask The Collectibles Appraiser – Have an old train set hidden away in the closet? Wondering what it's worth? Bring it to the show and find out from The Collectibles Expert. Free to all attendees.

Children's Play Area – 1,500 sq. ft. of fun including trains, games and more for children of all age to enjoy during the show. The area is chaperoned at all times and is free of charge.

Hands –On-Demonstrations – Learn how to get started on your own model railroad empire and find out the latest techniques from well-known exhibitors, and from pros at the Meet the Master Modeler booth.



# looking back at our past events...

# NMRA

meeting  
August 2, 2016

Business Meeting was called to order at 7pm by Pamela Todd, Superintendent

Results from the Q&A Survey were discussed



The meeting was adjourned at 9:00pm.



# WICHITA AREA MODEL RAILROADERS



Monthly Luncheon Meeting

August 16, 2016

11:30am at Golden Corral

11006 East Kellogg Drive

Wichita, KS 67207-1922

(Just a short distance west of Greenwich Road on north side of street)

Our Hostess is "Bere"

\*\*\*\*\*

\*\*\*\*\*

Wichita Area Model Railroaders,

a fellowship of model railroaders in the Wichita, Kansas area.

\*\*\*\*\*Tuesday's Program\*\*\*\*\*

We'll put our Fall 2016 Calendar together

So Many Fall Events Coming Up!

Train Shows

Road Trip to Spring Creek

Layout Tours

Holiday Parties

\*\*\*\*\*

\*\*\*\*\*



Lionel Smith opened the bidding...



...and the bid was awarded to "Grandpa Aagaard" for his two little "Princesses" this coming Christmas...





...that's  
"Miss Vivian" on  
the left and  
"Miss Fiona" on the  
right...



Wayne Schlueter shared with us how he has made several car "loads" from scrap metal shavings (along with his C\*A\*U\*T\*I\*O\*N of them being EXTREMELY sharp.







...and immediately after lunch, that same day, Jim Marlett requested assistance and we four showed up...(the lifters, the engineer, and the photographer). Jim needed to have his previous portion of his layout lifted up onto the temporary base to enable him to work on preferred height and establish proper support.

(Lifters and Engineer standing in front of the layout section)

Layout in place on right



here are a couple shots of the newly placed layout segment



with a panoramic view of Jim's basement "Pike"



...and, yes, "The Mrs." was pleased with the progress... Let's hear a big cheer for Patty!!!





# tales from the road

Dan and Millie took several "road Trips" during August, 2016. The first was to Galena, KS (August 12, 2016)





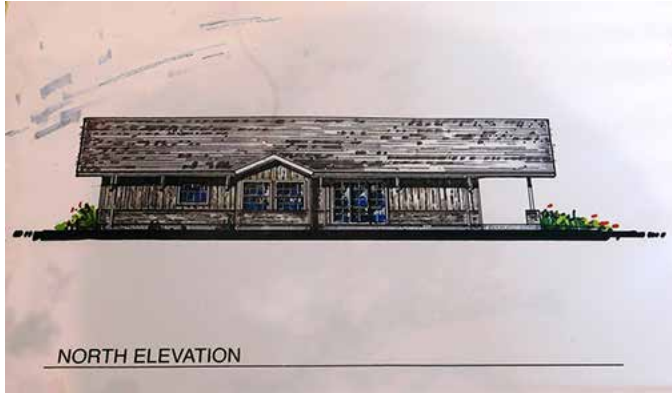


Then, August 14, 2016, Dan & Millie were in Eureka Spring, Arkansas - when on the way out of town they saw the Depot.





Open of the new Depot in Beaumont Kansas on 8-26-2016



Friday night Bob & Rhonda and Dan & Millie we went to Beaumont Kansas for the opening of the New Depot for cutting the ribbon of the New Depot then we went to the Hotel for dinner a lot of people were there from all over Kansas. GREAT NIGHT



look closely as they cut the ribbon







...wanna guess which “caboose” might just appear in the next “Caboose Kibitzer”??? Thanks, Dan!!!



...ya, all get to vote - which view do you like best for our “Regional Publication”?

Please contact the editor:

alan.a.aagaard@GMail.com





Millie and Dan Hagenbuch



Bob and Ronda Hoover



...nightie, night...y'all



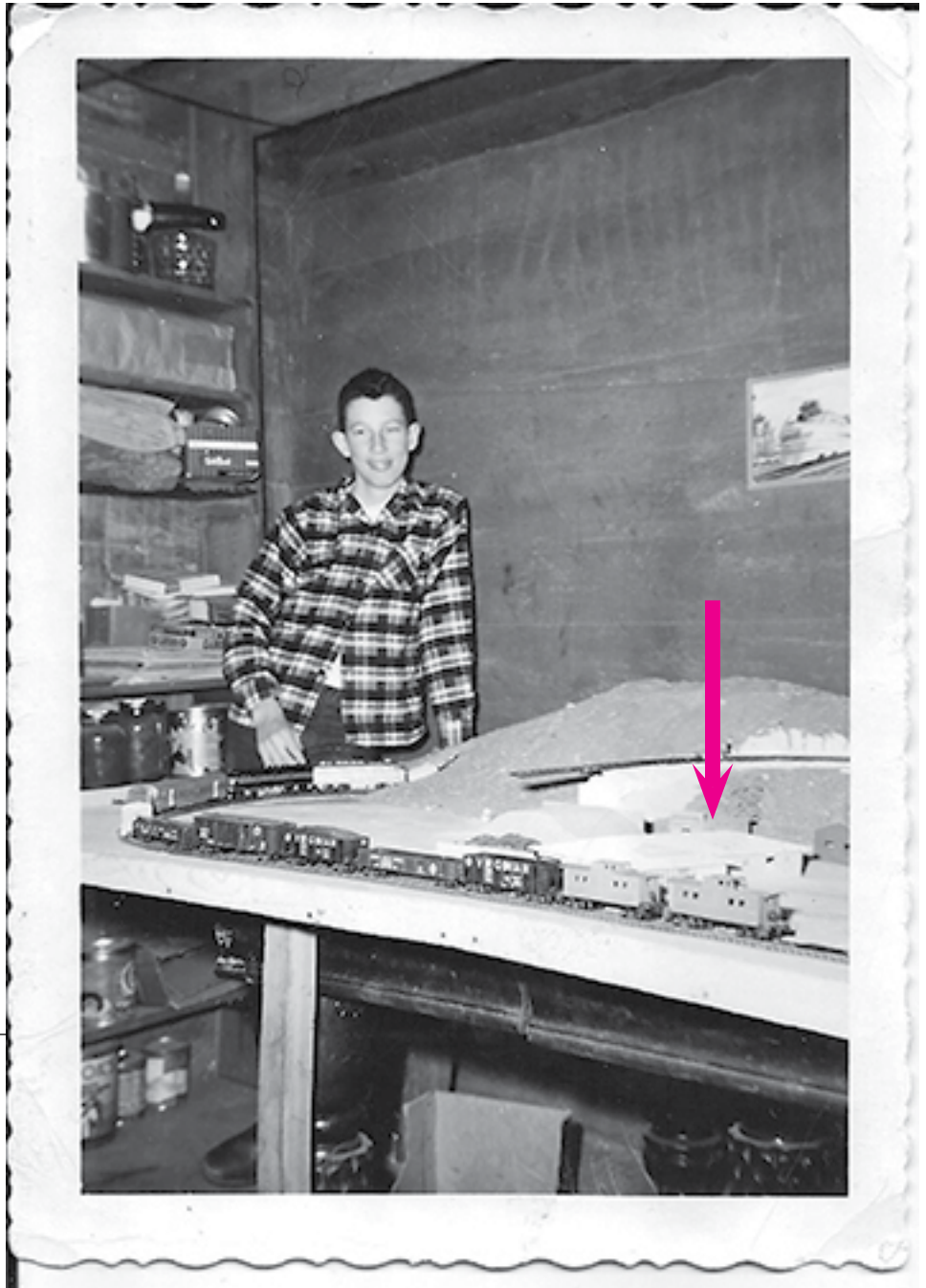
# "ONCE UPON A TIME" ~ GUESS WHO...???

**"...Think about me  
Once upon a time  
In your wildest dreams...,  
In your wildest dreams...,  
In your wildest dreams."**

*{as quoted from the final lines of the lyrics  
"Once Upon A Time"  
by the Moody Blues}*

and your clues are the following:

- Photo was taken in February 1957 (Prarie View, KS)
- This young lad moved from Hays, KS to Planeview, KS; then to Stockton, KS; and on to Glade, KS; followed by moves to Phillipsburg, KS; and then to Stutgart, KS; and finally, here to Prarie View, KS.
- This was our "mystery man's second layout
- This was designed to be his first NOT on the floor, and was to be the first portion of his "sectional dream plan"
- He was proud to point out the "table sawing" was done by his dad (a public School Teacher in a school building which housed all K-12 grades)
- Another teacher within the building had a model of his house (see magenta arrow in the photo) and was gifted to our mystery man
- Motive power and Rolling Stock were from Breakfast Cereal Box Tops traded in for Varney™ items as directed by information on the back cover of Model Railroader magazines in the 50's
- Electrical was state of the art DC in the day and was very **NOISY** as the engine "growled" ahead of the rolling stock.
- The layout was initially a loop with a siding (to be connected to his future/fantasy layout)
- His layout was located below the house in what had once been the coal bin for their furnace
- Scenery was chicken wire with plaster (painted earthen colors)
- 
- so, are you ready to guess who???



well, folks, this is the last of my "stash" - so, PLEASE send me your photos and/or stories of your past

# ...calendar/coming attractions...



2016

September

- September 7<sup>th</sup> - 10<sup>th</sup>, 2016 (Wednesday - Saturday) **36<sup>th</sup> National Narrow Gauge Convention** (Augusta, Maine) Learn more at: <http://nngc2016.org/wp/>

- Saturday, September 10<sup>th</sup>, 2016 at 1pm

**Augusta Model Railroad Club**

Upcoming Operating Sessions:

JMRI Switchlists

Come by and check out the Augusta Model Railroad Club located at 545 School Street (Augusta, KS). The operating session listed above is full for operators, but if you are interested in operations come by, and want to join, stop by on that date or eMail Matt Martin at: [MMartin104@gmail.com](mailto:MMartin104@gmail.com)

- September 24<sup>th</sup> & 25<sup>th</sup>, 2016 -- The Wichita Toy Train Club is sponsoring their “**Model Train Show**” at the Cessna Activity Center (Wichita, KS)

Learn more from:

Rich Meister

WTTC Show Committee Chair

[amflyer1@cox.net](mailto:amflyer1@cox.net)

## October

- October 6<sup>th</sup> - 9<sup>th</sup>, 2016 - **Missouri Pacific Historical Society National Convention**, Jefferson City, MO

- October 15<sup>th</sup> & 16<sup>th</sup>, 2016 - **Western Kansas Train Show** to be held at the Ellis County Fairgrounds (Hays, KS)

## November

- November 5<sup>th</sup> & 6<sup>th</sup>, 2016 -- The Wichita Toy Train Club is sponsoring the “**Arkansas City Train Show**” at the Agri-Business Building (Arkansas City, KS)

Learn more from:

Rich Meister

WTTC Show Committee Chair

[amflyer1@cox.net](mailto:amflyer1@cox.net)

- November 5<sup>th</sup> & 6<sup>th</sup>, 2016 -- The **Mid-Continent Prototype Modeler's Meet** is being held at the Benton Lions Community Center (Benton, KS)

- November 19<sup>th</sup> & 20<sup>th</sup>, 2016 -- The **Boot Hill Model RR Club Train Show** will be held in the Western State Bank Expo Center (Dodge City, KS)

**MODEL TRAIN SHOW**  
**Sept. 24-25**  
**Cessna Activity Center**  
2744 Geo. Washington Blvd,  
**Wichita, KS**  
New Children's Activities  
Buy, Sell, +Parts & Repairs  
All Gauges  
Kids under 12 Free  
Both Days \$7.00  
Sat. 9-5, Sun 10-3  
[www.WichitaToyTrainClub.org](http://www.WichitaToyTrainClub.org)

**Arkansas City Train Show**  
**Nov. 5<sup>th</sup>-6<sup>th</sup>**  
**Agri-Business Building**  
712 W. Washington Ave  
**Arkansas City, KS**  
Both Days \$5.00  
(\$1 off with non-perishable food item)  
Kids under 12 Free (w/ paid adult)  
Sat. 9-4, Sun. 10-3  
Buy, Sell, +Parts & Repairs  
Railroad Collectables  
Layouts & Door Prizes  
80+ Dealer tables  
[www.WichitaToyTrainClub.org](http://www.WichitaToyTrainClub.org)

“Calendar...”  
Continued on page 26

Trails, Rails, & Tales  
September/October 2016

25



- November 27<sup>th</sup>, 2016 ~ **Mid-America Train & Toy Show** will be held at the KCI Expo Center (Kansas City, MO)

## December

- December 3<sup>rd</sup> & 4<sup>th</sup>, 2016 ~ **The Oklahoma City Train Show** will be held in the Cox Pavilion at the Oklahoma State Fairgrounds (Oklahoma City, OK)
- December 1<sup>st</sup> - 4<sup>th</sup>, 2016 - **21<sup>st</sup> Southern Plains N-Scale Convention** will be held in the Cox Pavilion at the Oklahoma State Fairgrounds (Oklahoma City, OK)
- December 2<sup>nd</sup> - 4<sup>th</sup>, 2016 - **The Train Expo Colorado (TECO)** will be held in the Mortgage Solutions Financial Expo Center (Colorado Springs, CO)
- December 9<sup>th</sup> - 11<sup>th</sup>, 2016 - **The Boulder Model Railroad Club Train Show** will be held at the Boulder County Fairgrounds (Boulder, CO)
- December 10<sup>th</sup> & 11<sup>th</sup>, 2016 - **The Rocky Mountain Toy Train Show (TCA)** will be held at the Denver Merchandise Mart (Denver, CO)

## 2017

### January

- January 7<sup>th</sup> & 8<sup>th</sup>, 2017 - **Train Expo Colorado (TECO)** will be held in the Mortgage Solutions Financial Expo Center (Colorado Springs CO)
- January 28<sup>th</sup> & 29<sup>th</sup>, 2017 - **Great Train Expo (GTE)** will be held in the Century II Convention Center (Wichita, KS)

### February

- February 4<sup>th</sup> - 5<sup>th</sup>, 2017 - **Wichita Train Show & Swap Meet (NMRA)** will be held at the Cessna Activity Center (Wichita, KS)
- February 11<sup>th</sup> & 12<sup>th</sup>, 2017 - the **Rails in the Rockies** will be held in the Rocky Mountain Park Inn (Estes Park, CO)

### March

- March 4<sup>th</sup> & 5<sup>th</sup>, 2017 - **Rocky Mountain Toy Train Show (TCA)** will be held in the Denver Merchandise Mart (Denver, CO)
- March 18<sup>th</sup> & 19<sup>th</sup>, 2017 - **Boot Hill Model RR Club Show** will be held in the Exhibition Building on the Finney County Fairgrounds (Garden City, KS)

### April

- April 6<sup>th</sup> - 8<sup>th</sup>, 2017 (Thursday- Saturday) **31<sup>st</sup> Sn3 Symposium** (St. Louis, MO)  
Learn more at: <http://www.sn3-2017.com/>

# in future issues...

In our next issue we will feature articles from our Chisholm Trail Division which will include:

- Progress UpDate of those working toward/achieving the NMRA's "Golden Spike"
- "Tips and Techniques" from many of us
- additional tools with "*double entendre*"
- *and please, Please, PLEASE send some photos and your story to be included in:*

## **"ONCE UPON A TIME" GUESS WHO...???**

- and much, MUCH more...

We will hear (and see) Pikes from:

- Ed Antrim
- Gene Bowers
- Jim Dallas
- Charles Dugnolle
- Ken Gale
- Larry Gulick
- John Kraft
- Tom Smith
- ...further adventures of the  
"Narrow Gaugers"
- and others stories